

Causeway Coast and Glens Borough Council

To: Leisure & Development Committee

8th December 2015

Revitalise Programmes Ballycastle & Coleraine

For Information

Report to Committee

Linkage to Interim Corporate Plan	
Strategic Themes	Prosperity Cohesive Community
Lead Officer	Paul Beattie – Head of Prosperity and Place
Cost: (If applicable)	£31,111.11 (£20,500 Ballycastle & £11,111.11 Coleraine)

The purpose of this report is to provide Members with background information relating to the current Revitalise Programmes underway in Ballycastle and Coleraine with funding awarded from the Department for Social Development.

Background

Revitalisation Programmes seek to improve building frontages and gables and promote designated areas within each town as places for shoppers and visitors, and to improve the overall attractiveness of the areas identified.

Applications were submitted to the Department for Social Development (DSD) by CCGBC for two Revitalise Programmes; Ballycastle Town Centre and Railway Road Area Coleraine and were successfully awarded funding totalling £200K for the period 2 November to 31 March 2016.

Ballycastle were awarded £100k to complete the revitalisation of Ballycastle town centre and Coleraine were awarded £100k to complete Stage 1 of the Railway Road area. CCGBC will match fund the programmes at a cost of £20,500 for Ballycastle and £11,111.11 for Coleraine. The table below shows a breakdown of how this funding will be allocated within each project.

Ballycastle Town Centre Total Budget £120,500	Coleraine – Railway Road Stage 1 Total Budget £111,111.11
Total of 62 properties identified and the project aims to complete improvements to 70% within the designated area.	Total of 29 properties identified and the project aims to complete improvements to 80% within the designated area. Coleraine will also address the area fronting the Railway Place car park.
£115,500 allocated to Revitalise Frontages and gables of businesses.	£107,111.11 allocated to Revitalise Frontages and gables of businesses.
£5000 allocated to Marketing and Promotion of the designated area.	£4000 allocated to Marketing and Promotion of the designated area.

Each programme will be operated simultaneously. The deadline for completion of works to properties is 29th February 2016 and the final deadline for all activity on the project is 31st March 2016. The deadline for the final claim to DSD is 30th April 2016.

Applications will be assessed by a Steering Group set up for each area consisting of Councillors, Ballycastle Town Partnership / Coleraine Town Team and local business representation. The Steering Group will be assisted by representatives from DSD and council officers from Place & Prosperity, Planning and Environmental Services. The following types of work may be considered:

- Refurbishment and repairs to existing frontages including plaster, woodwork, gutters, downpipes and windows.
- Painting of building frontages, window frames, gutters.
- Replacement or renewal of shop signage.
- Works to building gables.
- Feature lighting.

Update

Ballycastle Programme

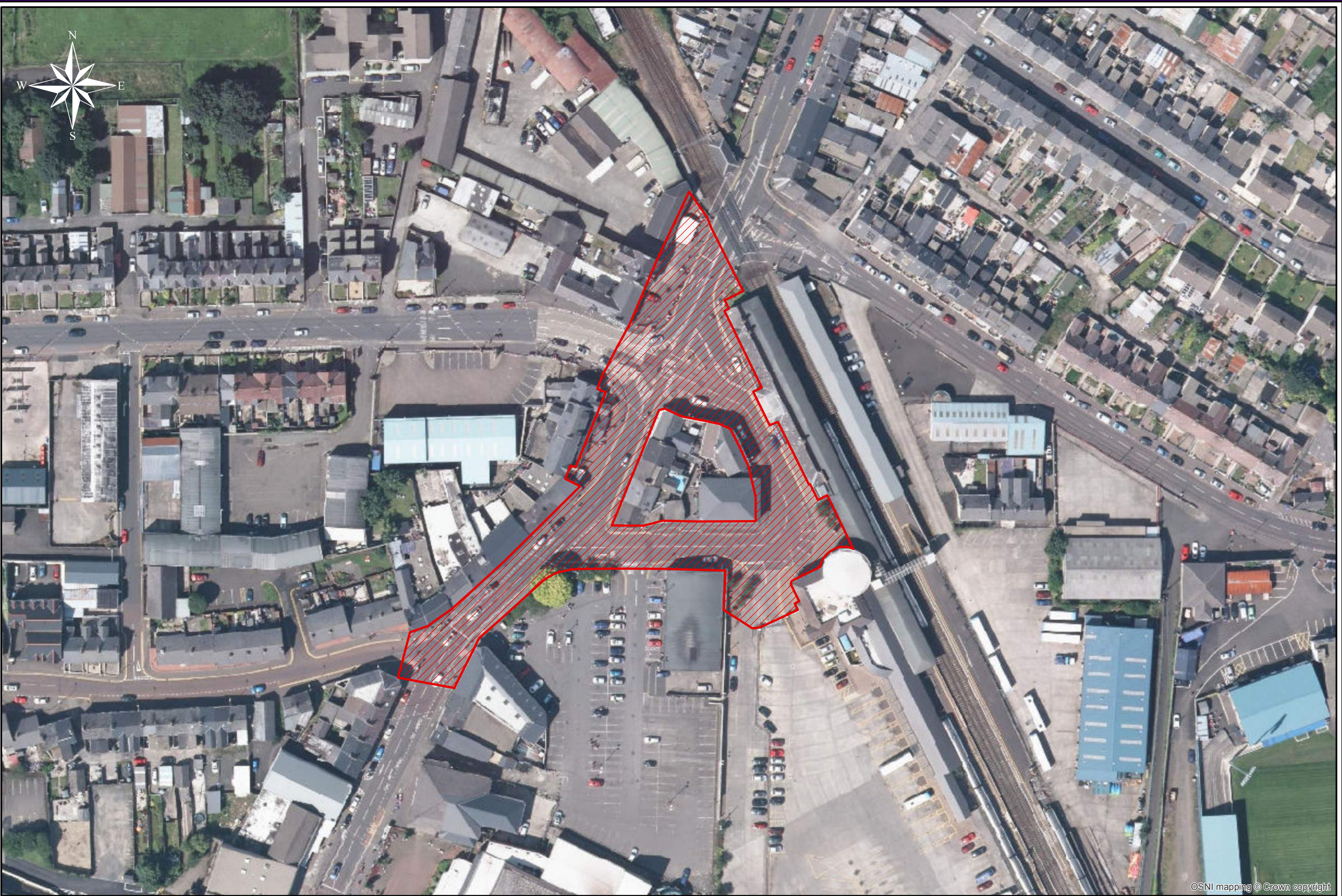
- Applications opened 29th October with a closing date of 6th November. Applications will be considered if funds are still available.
- Open meeting held 29th October for businesses in the designated area.
- Application clinic hosted by council to assist with the application process.
- Assessment sessions currently underway and Letters of Offer will be issued to applicants in due course.
- Marketing activity plan being developed.

Railway Road Area Stage 1, Coleraine Programme

- Applications opened 5th November with a closing date of 23rd November. Applications will be considered if funds are available.
- Open meeting held 5th November for businesses within the designated area.
- Application clinic hosted by council to assist with the application process.
- Assessment sessions currently underway and letters of Offer will be issued to applicants in due course.
- Marketing activity plan being developed.

Maps of the individual designated areas for both towns can be seen in Annex A and B.





OSNI mapping © Crown copyright