

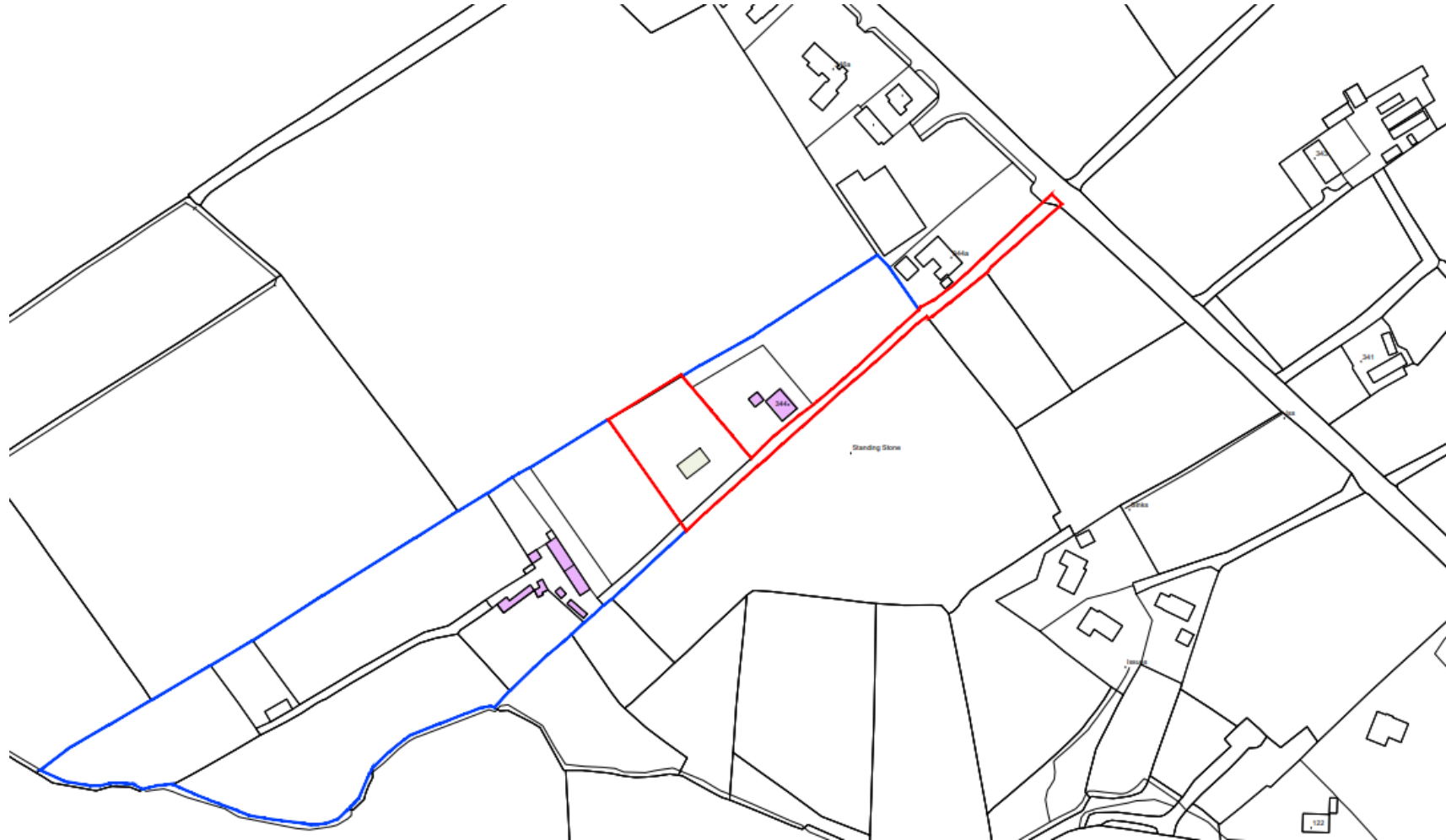


Causeway
Coast & Glens
Borough Council

LA01/2024/0170/O

Proposed Infill Dwelling and Garage

Site: Approximately 35m South-West of 344 Craigs Road Rasharkin.



Site Location



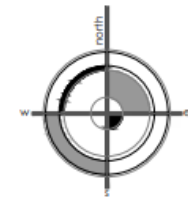
Land Owned



Buildings
Forming Ribbon
Development



Indicative
Locations of
Infill Dwelling



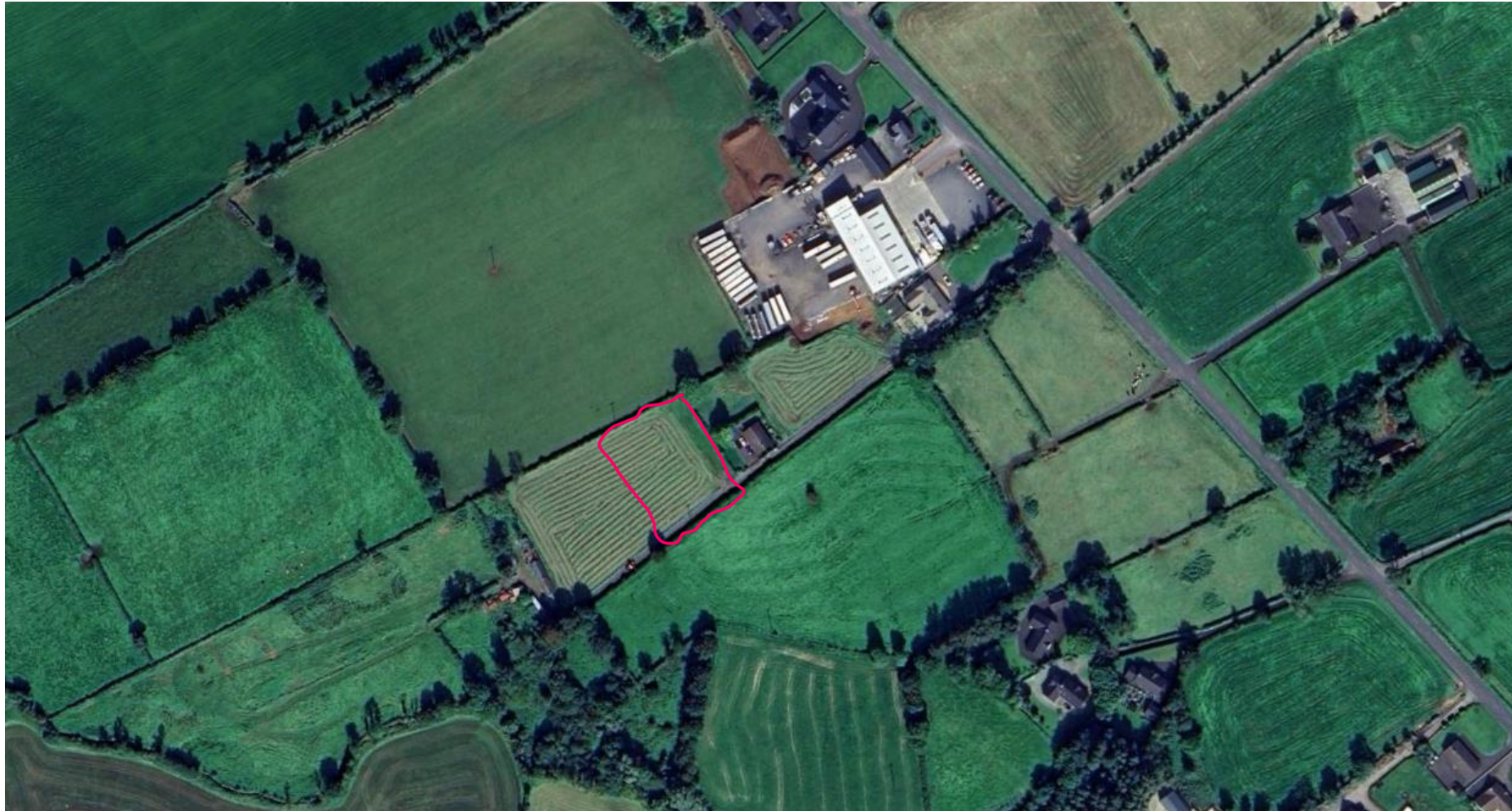
© Copyright 2020 Architects Ltd or their clients. This drawing or any part thereof must not be copied or used in whole or in part without written consent of Architects Ltd. All rights reserved, respect copyright.

Rev.	Description	Date	Init.

Planning



Causeway
Coast & Glens
Borough Council





Causeway
Coast & Glens
Borough Council





Causeway
Coast & Glens
Borough Council







Causeway
Coast & Glens
Borough Council





Causeway
Coast & Glens
Borough Council

