

Title of Report:	Correspondence
Committee Report Submitted To:	Council Meeting
Date of Meeting:	10 January 2023
For Decision or For Information	FOR DECISION

Linkage to Council Strategy (2021-25)	
Strategic Theme	Cohesive Leadership
Outcome	Council operates as one effective and efficient corporate unit with a common purpose and culture
Lead Officer	Director of Corporate Services

Budgetary Considerations	
Cost of Proposal	
Included in Current Year Estimates	
Capital/Revenue	
Code	
Staffing Costs	

Screening Requirements	Required for new or revised Policies, Plans, Strategies or Service Delivery Proposals.		
Section 75 Screening	Screening Completed:	Yes/No	Date:
	EQIA Required and Completed:	Yes/No	Date:
Rural Needs Assessment (RNA)	Screening Completed	Yes/No	Date:
	RNA Required and Completed:	Yes/No	Date:
Data Protection Impact Assessment (DPIA)	Screening Completed:	Yes/No	Date:
	DPIA Required and Completed:	Yes/No	Date:

1.0 Purpose of Report

The purpose of the report is to present correspondence for Members' consideration.

2.0 The following correspondence has been received:

2.1 **NI Housing Council** (email correspondence dated 8 December 2022) (copy attached)

The Housing Council's December bulletin and November Housing Council minutes are enclosed for Elected Member information.

2.2 **Correspondence from Marie Ward, Chief Executive, Newry, Mourne and Down District Council** (copy attached)

At a Meeting of Newry, Mourne and Down District Council held on 5 December 2022 the following motion was agreed:

Motion

"It was agreed that Newry Mourne and Down District Council calls upon the extension of laws that are being proposed at Westminster giving workers a legal right to their tips be extended here to Northern Ireland. If this Motion is adopted, we write to the other ten local authorities seeking their support and also to the Permanent Secretary at the Department of the Economy and the relevant Minister at Westminster strongly urging that the legislation in Northern Ireland be brought into line with Great Britain and the Republic of Ireland as a matter of urgency".

Members fully supported the Motion and agreed it would be a positive step towards improving the rights and entitlements of lower paid workers.

Newry, Mourne and Down District Council ask that Council give this matter serious consideration and look forward to your response.

It is recommended that Council consider the correspondence.



**Minutes of the 495th Meeting
of the Northern Ireland Housing Council held on
Thursday 10th November 2022 at 10 am via Zoom**

Present

Cllr Anne-Marie Fitzgerald	Fermanagh & Omagh District (Chair)
Ald Jim Speers	Armagh City, Banbridge & Craigavon Borough
Ald Amanda Grehan	Lisburn City & Castlereagh
Ald Adrian McQuillan	Causeway Coast & Glens Borough
Ald Allan Bresland	Derry & Strabane Borough
Ald Tommy Nicholl	Mid & East Antrim Borough
Cllr Catherine Elattar	Mid Ulster Borough
Cllr Michael Ruane	Newry, Mourne & Down District

In Attendance:

Paul Price	Director of Social Housing Policy & Oversight, Department for Communities
Grainia Long	Chief Executive, NIHE
Adrian Blythe	Quality Improvement Manager, NIHE
Kelly Cameron	Secretary (NIHE Secretariat)

Apologies:

Cllr Mark Cooper	Antrim & Newtownabbey Borough (Vice Chair)
Cllr Michelle Kelly	Belfast City
David Polley	Director, Housing Supply Policy, Department for Communities

1.	<p><u>Welcome</u></p> <p>The Chair welcomed Paul Price and Julie Lavery from the Department for Communities and from the Housing Executive, Grainia Long.</p> <p>She also welcomed the Presenter Adrian Blythe, Quality Improvement Manager from the Housing Executive.</p>	
2.	<p><u>Declarations of Interest</u></p> <p>No declarations were received.</p>	

3.	<p><u>To adopt the Minutes of the 494th Housing Council Meeting held on Thursday, 13th October 2022</u></p> <p>It was proposed by Councillor C Elattar and seconded by Alderman J Speers and resolved, that the Minutes of the 490th Meeting of the Housing Council held on Thursday 13th October 2022 be approved and signed by the Chair.</p>	
4.	<p><u>Matters Arising from the Minutes</u></p> <p>NI Water Service</p> <p>It was reported that a letter had been sent to the NI Water, inviting a representative to a future Meeting on waste water infrastructure, a reply is awaited.</p>	
5.	<p><u>Forward Workplan</u></p> <p>The forward workplan was noted.</p>	
6.	<p><u>Report from Grainia Long, Chief Executive, Housing Executive</u></p> <p>The Report provided the Housing Council with a monthly update summarising a range of strategic, major or routine matters, including any emerging issues. A summary of the current / emerging issues are outlined as follows:-</p> <ul style="list-style-type: none"> • Planned Maintenance contract <p>The Chair reiterated the importance of communication channels in place, to ensure tenants were briefed on the impact for planned improvement works to their homes.</p> <ul style="list-style-type: none"> • Green End Rathcoole • Annual Performance with the Minister, Deirdre Hargey MLA • Corporate Plan • Waterside Triangle • New Leasehold Policy <p>Agreed: to provide more information to Members on the new Policy, in order to promote this policy.</p> <ul style="list-style-type: none"> • Sustainable Development Strategy Update • Cost of Living Crisis • Future Working Practices & Accommodation Strategy • Industrial Action and Pay Claims for 2022/23 <p>Members welcomed the national pay offer of £1,925 for all employees. Several Members commended the staff of local Housing Executive offices, in particular at the forefront through the pandemic and added that their work is appreciated by both Councillors and tenants and asked that this sentiment is passed onto staff.</p>	<p style="text-align: center;">GL</p> <p style="text-align: center;">GL</p>

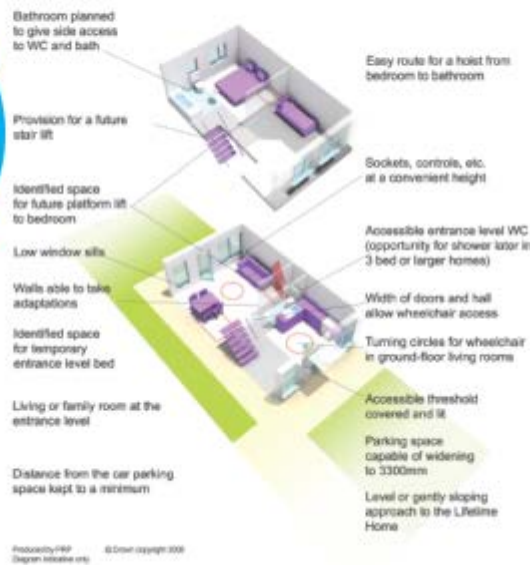
	<ul style="list-style-type: none"> • Pay & Grading Review • Staff Conference • Fundamental Review of Allocations (FRA) • Ukrainian Resettlement Programme <p>The Chair thanked Grainia Long for a very informative Report.</p>	
7.	<p><u>Lifetime Homes in Northern Ireland</u></p> <p>Adrian Blythe gave Members a Presentation by the Housing Executive on Lifetime Homes (LTH) in Northern Ireland. (Copies of the slides are appended to these Minutes – Appendix A).</p> <p>Members agreed to encourage and promote their Councils to exploring Lifetime Homes through their Local Development Plans.</p> <p>Agreed:</p> <ul style="list-style-type: none"> • Letter to be sent to Building Regulations seeking clarification on the regulations, in which Private developers are currently adhering for new build properties and their views on the issue; • Letters to be sent to the 11 Councils in relation to urge Councils when developing your Local Development Plans to consider including Lifetime Homes within their Plans; • G Long suggested the inclusion to Councils Housing Investment Plans Annual Presentation on LTH in their Development Plans; • Members to visit the Ultra Low Energy New Build pilot scheme in Ballysillan Road, Belfast when completed. <p>The Chair thanked Mr Blythe for an excellent Presentation.</p>	<p>ALL</p> <p>Sec</p> <p>Sec</p> <p>GL</p> <p>Sec</p>
8.	<p><u>Housing Starts – October 2022</u></p> <p>Members requested if more information could be provided on the Housing Starts.</p> <p>The Report was noted.</p>	
9.	<p><u>Any Other Business</u></p> <p>There was no other business.</p>	
10.	<p><u>Date of next Meeting</u></p> <p>The next Housing Council Meeting is scheduled to take place on Thursday, 8th December 2022 at 10 am in the Housing Centre or via Zoom</p>	

Appendix A



Lifetime Homes in Northern Ireland

Lifetime Homes Diagram



www.nihe.gov.uk

Adrian Blythe
Quality Improvement
Manager

Lifetime Homes in Northern Ireland



CONTENT :

- Housing Standards in Northern Ireland
- Lifetime Homes' Concept
- Comparison between Part R and Lifetime Homes
- Northern Ireland Affairs Committee
- Social and Economic Benefits
- Some adaptations explored
- What is happening elsewhere?
- Accessible Housing Register
- AHR Accessibility Classifications
- Ultra Low Energy New Build Pilot
- Any Questions?

www.nihe.gov.uk

Lifetime Homes in Northern Ireland

www.nihe.gov.uk

Housing Standards in Northern Ireland



Part R Building Regulations for new private housing

Lifetime Homes standards for social housing

Wheelchair housing

Adaptations for all sectors of housing

Lifetime Homes in Northern Ireland

www.nihe.gov.uk

Lifetime Homes Concept



- The Lifetime Homes (LTHs) concept was initially developed in 1991 by the Joseph Rowntree Foundation and Habinteg (England) Housing Association
- 'Lifetime Homes' standards currently apply to all new Housing Association social dwellings in Northern Ireland since 1998
- LTHs are a nationally recognised set of criteria that aim to make housing sufficiently accessible and adaptable to meet the existing and changing requirements of occupants at minimal cost
- Allows people to stay in their homes, or for longer when their needs change. Such household might include older people, families with children and some people with physical disabilities.
- From 1st April 2012 the LTH standards and the 'LTH Additional Departmental Requirements' became part of the core design standards and an adjustment made to the TCI Baseline costs

Lifetime Homes in Northern Ireland

www.nihe.gov.uk

Comparisons between Part R and Lifetime Homes



- Part R (Building Regulations NI) implemented for all new dwellings since April 2001
 - Are minimum regulatory standards
 - Are a visitable standard
 - Make a home accessible primarily for the visitor
- Lifetime Homes implemented for Social Housing since 1998
 - Incorporates 16Nr Design Standards
 - Make a home accessible for most people including visitors, with priority given to the occupant who lives there
 - Includes flexibility and adaptability designed in from the start to cater for most long term needs
 - Are not a substitute for purpose-designed wheelchair standard housing

Lifetime Homes in Northern Ireland

www.nihe.gov.uk

Comparisons between Part R and Lifetime Homes

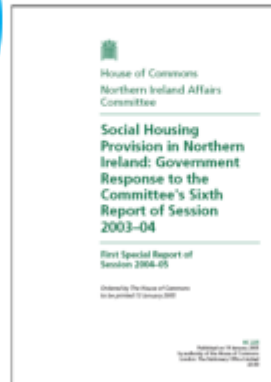


Design Standard	Lifetime Homes	Part R Building Regs
1. Car Parking Width	✓	
2. Access from Car Parking	✓	✓
3. Approach Gradients	✓	✓
4. External Entrances/Covered Approach	✓	
5. Communal Stairs & Lifts	✓	
6. Doorways & Hallways	✓	✓
7. Wheelchair Accessibility	✓	
8. Living Room at entrance level	✓	
9. Entrance Level Bedspace	✓	
10. Entrance Level WC& Shower Drainage	✓	✓ No shower drainage
11. Bathroom & WC Walls	✓	
12. Stair Lift/Through-Floor Lift	✓	
13. Tracking Hoist Route	✓	
14. Bathroom Layout	✓	
15. Window Specification	✓	
16. Controls, Fixtures & Fittings	✓ 600mm-1200mm	✓ 450mm-1200mm

Northern Ireland Affairs Committee



Lifetime Homes in Northern Ireland



21. We recognise the substantial benefits for people with disabilities in having all new dwellings built to Lifetime Homes standard as well as the potential longer term savings on the cost of adaptations. We call on Ian Pearson, the Minister with responsibility for Finance and Personnel, to introduce the Lifetime Homes standard as soon as possible by amending the relevant building regulations (Paragraph 118)

www.nihe.gov.uk

Lifetime Homes Social Benefits



Lifetime Homes in Northern Ireland



- Most people didn't realise they were living in a Lifetime Home due to the ordinary appearance
- Lifetime Homes are a significant move in "designing in" the current and future needs of the occupier
- Lifetime Homes have a valuable role in home accident prevention
- Lifetime Homes were seen to have a positive impact upon the physical and social needs of the respondents
- Increased visitability and accessibility were regarded as positive aspects of the dwelling
- Lifetime Homes need to be provided in conjunction with wheelchair standard housing to meet the full range of community needs

www.nihe.gov.uk

Lifetime Homes in Northern Ireland



- Reduce significant costs associated with adapting homes in Northern Ireland
- Comparison in costs to build to Lifetimes Homes and Part R of the Building Regulations
- Additional costs of Lifetime Homes could be recouped in 3-10 years
- Reduce the need for temporary residential care and other decanting arrangements
- Savings in health care costs
- Savings in rehousing costs

www.nihe.gov.uk

ground floor – typical LTH



- Wider Entrance Door
- Lighting and canopy at front door
- Better in-curtilage parking space
- Better window design
- More accessible ground floor toilet for wheelchair users
- Space for temporary bed space
- Wheelchair turning spaces, within ground floor
- Socket height to suit both wheelchair users and ambulant disabled people

www.nihe.gov.uk

first floor – typical LTH



- Planning for a future stair or inter-floor lift
- Ceiling capable of taking a future tracking hoist from bedroom to bathroom
- Bathroom walls capable of taking fixtures
- Bathroom designed to incorporate ease of access to bath, WC and WHB
- Adequate circulation space

Ground & first floor – adaptations



Lifetime Homes in Northern Ireland

www.nihe.gov.uk

What is happening elsewhere?



- Belfast City Council's draft Local Development Plan references LTHs in their Housing Technical supplement. Other Councils such as Mid & East Antrim Council are also following suit.
- In 2015 LTHs in England were largely superseded by their Building Regulations. Approved Document M sets three levels of accessibility
 - a. Category 1: VISIBLE dwellings
 - b. Category 2: Accessible and adaptable dwellings (generally equivalent to LTHs)
 - c. Category 3: Wheelchair user dwellings
- New social housing in Wales (under their Development Quality Requirements 2021) are still required to achieve LTHs
- BS9266: Design of accessible and adaptable general needs housing (2013) was drawn up by the British Standards Institute with a view to superseding LTHs
- LTHs website has been closed down although the LTHs Design Guide is still available to purchase
- Habinteg (England) own the copyright on the name 'Lifetime Homes.'

Lifetime Homes in Northern Ireland

www.nihe.gov.uk

Accessible Housing Register



- The development of an Accessible Housing Register (AHR) is a Department for Communities (DfC) objective within their Facing the Future Housing Strategy 2012-17 Action Plan.
- Demographic trends indicate that the Northern Ireland elderly population is rising and while people are living longer they will do so with some form of disability. Demand & costs for adaptations continues to rise.
- **An Accessible Housing Register is:**
 - **Allocation tool** – Housing Authorities will be able to identify specific properties that may meet the needs of a particular group of applicants on the waiting list.
 - **Information tool** – provide frontline staff with accessible stock information which will enable them to assist disabled people to make more informed housing choices. Landlords will also know where their accessible stock is located and make better use of that stock.
 - **Planning tool**- it will help place shapers identify unmet need.

Lifetime Homes in Northern Ireland

www.nihe.gov.uk

AHR Accessibility Classifications

A Wheelchair accessible throughout

These properties have been designed to the meet wheelchair design standards offering extra space and full access to all rooms and facilities. This standard provides more space and ensures that all rooms are accessible.

B Wheelchair accessible essential rooms

Properties designed or adapted to provide access for wheelchair users to essential facilities of the property (that is bedroom, bathroom, living room, dining room (if applicable) and kitchen). Other rooms within the house may not be wheelchair accessible such as upper floor bedrooms.

C Lifetime Homes

Designed to meet the space standards of lifetime homes. Main features include a level approach/entrance and wider doorways. Properties may have an internal flight of stairs which will be wide enough to accommodate future provision of a stair lift subject to technical feasibility.

D Mobility Standard

The main features of these properties include a level approach to the entrance, wider doorways and more space than in general needs housing. Properties may have an internal flight of stairs and if so may be wide enough to facilitate future provision of a stair lift subject to technical feasibility.

E Step Free

These are properties that are considered general needs housing but have a level approach/entrance into the property. The main access feature is level access to the property and throughout. The property may have an internal flight of stairs which may be able to accommodate future provision of a stair lift.

EE Minimal Steps

Properties that do not meet any accessible housing design guidance and have a limited number of steps to enter the property. Properties in this category **will have no more than 4 steps** to access the principal door and are likely to be ground floor properties or properties in a block with a lift and a small number of communal or property front door steps.

F General Needs

General needs housing does not meet any of the above criteria. Properties in this category **will have more than 4+ steps** or a ramp access that is steeper 1:12 to access the property front door.



Ultra Low Energy New Build Pilot

www.nihe.gov.uk



Background

- DfC request for NIHE to assess Modern Methods of Construction (MMC) as an optimal model for future social housing new build in Northern Ireland
- Site on the Ballysillan Road Belfast
- 6 no. 3P2B semi-detached dwellings designed to Lifetime Homes



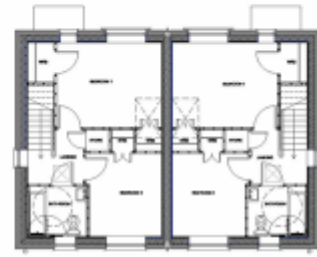
Benefits

- Help reduce risk of fuel poverty
- Lower carbon emissions
- Improvements in energy efficiency
- Comfortable and healthy indoor environments
- Informing policy and legislation in shaping future energy standards
- Wider societal benefits e.g. improved health and well-being for occupants
- Future proofing- utilising the LTH standards



LTH House Type Design

- 6 no. semi-detached dwellings designed to Lifetime Homes
- 2 bedroom, 3 person units
- Utilising MMC and ultra-low energy building techniques
- Incorporation of passive building systems



Proposed First Floor Plan

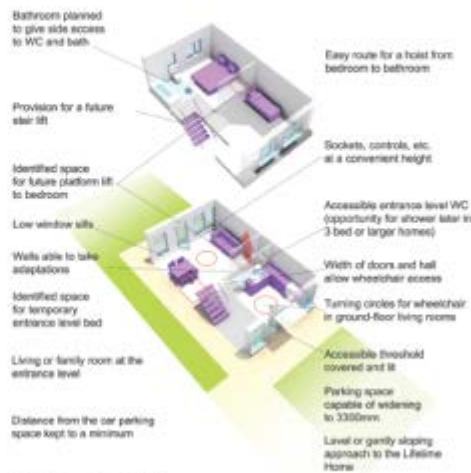


Proposed Ground Floor Plan

Lifetime Homes in Northern Ireland

Any Questions?

Lifetime Homes Diagram



Produced by NIHE © Crown Copyright 2008 Diagram illustrative only



CHAIR
Councillor Anne-Marie Fitzgerald

The Housing Centre
2 Adelaide Street
Belfast BT2 8P8

T: (028) 9598 2752
E: kelly.cameron@nihe.gov.uk
W: nihousingcouncil.org

DECEMBER HOUSING COUNCIL BULLETIN

The Northern Ireland Housing Council met on Thursday, 8th December 2022 at 10.00 am in the Boardroom, the Housing Centre of via Conference Call.

For Information, a report of the attendance is undernoted:-

Present

Anne-Marie Fitzgerald	Fermanagh & Omagh District (Chair)
Mark Cooper	Antrim & Newtownabbey Borough (Vice Chair)
Jim Speers	Armagh City, Banbridge & Craigavon Borough
Adrian McQuillan	Causeway Coast & Glens Borough
Allan Bresland	Derry City & Strabane District
Catherine Elattar	Mid Ulster Borough

Apologies

Victoria Moore	Ards & North Down Borough
Tommy Nicholl	Mid & East Antrim Borough
Michael Ruane	Newry & Mourne District
Grainia Long	Housing Executive

Discussions on the undernoted matters took place as follows:-

Report from Paul Price & David Polley from the Department for Communities on the Housing Top Issues.

A summary of the current / emerging issues are outlined **as follows**:-

- Social Newbuild starts
- Co-ownership
- Programme for Social Reform
- Fundamental Review of Social Housing Allocations Policy
- Housing Executive's House Sales Scheme
- Supporting People Delivery Strategy
- Homelessness Strategy
- Regulation of the Private Rented Sector
- Increasing Housing Supply
- Affordable Warmth Scheme
- Review the Caravans Act (NI) 2011
- ERDF Investment for Growth and Jobs Programme 2014 -2020
- Housing Executive historical debt and exclusion from having to pay Corporation Tax

- Programme for Government (PfG) Outcomes Framework
- Long term rent trajectory
- Affordability of social rents
- Housing Executive Rent
- Non ACM Cladding Remediation Scheme
- Climate Act DfC will lead on the 'Residential and Buildings Sector Plan'

Members also received a Presentation by the Housing Executive on Latent Demand Testing in Rural Areas

Once the minutes of the meeting are ratified at the January Meeting, they can be accessed on the Housing Council website: www.nihousingcouncil.org

The next Housing Council Meeting is scheduled for Thursday, 12th January 2023 at 10.00 am via conference call.

Should you require any further information or have any questions regarding the content.

Contacts

Secretary, Kelly Cameron

The Housing Centre,

2 Adelaide Street

Belfast

BT2 8PB

Kelly.cameron@nihe.gov.uk Tel: 028 95982752

Marie Ward
Chief Executive



Comhairle Ceantair
**an Iúir, Mhúrn
agus an Dúin**
**Newry, Mourne
and Down**
District Council

Our ref: C/207/2022

12 December 2022

Dear Chief Executive

Re: Notice of Motion – Workers Legal Rights to Tips

At a Meeting of Newry, Mourne and Down District Council held on 5 December 2022 the following motion was agreed:

"It was agreed that Newry Mourne and Down District Council calls upon the extension of laws that are being proposed at Westminster giving workers a legal right to their tips be extended here to Northern Ireland. If this Motion is adopted, we write to the other ten local authorities seeking their support and also to the Permanent Secretary at the Department of the Economy and the relevant Minister at Westminster strongly urging that the legislation in Northern Ireland be brought into line with Great Britain and the Republic of Ireland as a matter of urgency".

Members fully supported the Motion and agreed it would be a positive step towards improving the rights and entitlements of lower paid workers.

I would ask that you give this matter serious consideration and I look forward to your response.

Yours faithfully

Marie Ward
Chief Executive

